



AMERICANA

OUTDOORS



www.AMERICANA.com

Since 1947, Americana Outdoors has manufactured products that shade and protect from the weather. We are proud of our people, products, services and innovative "Firsts".

First to offer powder coating as a standard

First to introduce an "Anti-Graffiti" finish

First to utilize structural roof panels

First to manufacture with extruded fascia, gutter and ridge caps

First to offer super durable powder coat finish as standard

Americana is located in Southern Illinois, providing easy and cost-effective shipping to most locations nationwide. We design and manufacture our recreational shelters for durability, simple installation and low maintenance costs allowing our customers to maximize family and group use.

Sales & Installation Support

- Design and engineering support and documentation to satisfy local requirements: Heavy Snow, Seismic, High Winds, Hail, Custom Designs & Sizes.
- Average standard lead times are 6-8 weeks from receipt of approved order. Lead times may vary on design criteria.
- Installation and sales support available M-F (8am-5pm) central standard time.
- Since Americana is a custom manufacturer, non-standard items are routinely fabricated with no delays. Minimal extra charges may be incurred for engineering.



4-5

HIP ROOF STRUCTURES
NAVAJO SERIES
MOJAVE SERIES



6-11

GABLE ROOF STRUCTURES
ILLINI SERIES
MERAMEC SERIES
COLONIAL SERIES



12-15

GAZEBOS
APACHE SERIES
AZTEC SERIES



16-19

SMALL SHADE STRUCTURES
CHEROKEE SERIES
ALGONQUIN SERIES



20-23

SUNSHADE STRUCTURES
PERGOLAS
FABRIC SUNSHADES



24-27

WALKWAYS & ENTRANCES
WALKWAYS
ENTRYWAY COVERS



28-29

SPORTS STRUCTURES
SHAWNEE SERIES



30-35

INFORMATION
ACCESSORIES & OPTIONS
SITE FURNISHINGS
FINISHES & WARRANTY
ROOF PANELS & COLOR OPTIONS

NAVAJO & MOJAVE SERIES

FEATURED PROJECT *Town Square Event Shelter*



Structure: 42x42' Navajo Shelter



Location: Brownstown, Indiana



Design Notes: 18" Standing Seam Roof Panels with Cupola



Frame Color: 555 Dark Green

Roof Color: 865 Light Green

NAVAJO & MOJAVE PRODUCT FEATURES

Sizes: 12x12' minimum, extended sizes up to 40x60'

Roof Pitch: Standard 4/12

Optional Roof Pitch: 6/12

Structure: Four sided pre-fabricated, powder coated steel frame

Frame: Tubular or "C" channel

Gutters: Standard extruded aluminum on Navajo models, Mojave models are gutterless

Roof: Structural, interlocking panels for superior strength with less supports

Standard Roof Panels: 24" wide "W" design in high strength aluminum or galvalume

Optional Roof Panels: 8" aluminum flat panel, 3" sandwich panel, tongue & groove wood

Add-On Accessories: Cupola, double tier roof, dutch hip roof, aluminum railing



ILLINI SERIES

FEATURED PROJECT *Sports Complex Picnic Area*



Structure: 20x40' Illini Shelter



Location: Land O' Lakes, Florida



Design Notes: 3" Sandwich Panel Roof



Frame Color: 260 Cranberry

Roof Color: 550 Bone White

ILLINI PRODUCT FEATURES

Sizes: Ranging from 6-50' wide and 12-84' long

Roof Pitch: Standard 4/12

Optional Roof Pitch: 1/12 - 12/12

Structure: Pre-fabricated, powder coated steel frame

Frame: Tubular

Gutters: Standard extruded aluminum (wood roof excluded)

Roof: Structural, interlocking panels for superior strength with less supports

Standard Roof Panels: 24" wide "W" design in high strength aluminum or galvalume

Optional Roof Panels: 8" aluminum flat panel, 3" sandwich panel, tongue & groove wood with shingles

Add-On Accessories: Aluminum railing



MERAMEC SERIES



FEATURED PROJECT

School Playground Picnic Area



Structure: 12x20' Meramec Shelter



Location: Salem, Illinois



Design Notes: Tubular Frame Meramec Shelter



Frame Color: 260 Cranberry

Roof Color: 540 Tan

MERAMEC PRODUCT FEATURES

Sizes: Ranging from 20-41' wide and 20-54' long

Roof Pitch: Standard 3/12

Structure: Pre-fabricated, powder coated steel frame

Frame: Tubular or "C" channel

Gutters: Standard extruded aluminum (wood roof excluded)

Roof: Structural, interlocking panels for superior strength with less supports

Standard Roof Panels: 24" wide "W" design in high strength aluminum or galvalume

Optional Roof Panels: 3" sandwich panel, tongue & groove wood with shingles

Add-On Accessories: Aluminum railing



COLONIAL SERIES



FEATURED PROJECT

Lake Side Campground Picnic Area



Structure: 12x20' Colonial Shelter



Location: Norman, Oklahoma



Design Notes: Standard Colonial Shelter without Gable Fill



Frame Color: 255 Burgundy

Roof Color: 555 Dark Green

COLONIAL PRODUCT FEATURES

Sizes: Ranging from 12-22' wide and 20-40' long

Roof Pitch: Standard 3/12

Structure: Pre-fabricated, powder coated aluminum components

Frame: Tubular aluminum

Gutters: Extruded aluminum, purlins and ridge beams are standard

Roof: Structural, interlocking panels for superior strength with less supports

Standard Roof Panels: 24" wide "W" design in high strength aluminum or galvalume

Optional Roof Panels: 8" aluminum flat panel , 3" sandwich panel

Gable Fill: Aluminum gable fill kit is included

Add-On Accessories: Aluminum railing



APACHE SERIES



FEATURED PROJECT

Aquatic Center Picnic Area



Structure: 20' Diameter Apache Shelter



Location: Salem, Illinois



Design Notes: Single tier Apache with Cupola



Frame Color: 535 Ivory

Roof Color: 555 Dark Green

APACHE PRODUCT FEATURES

Sizes: 16-44' diameter

Roof Pitch: Standard 3/12

Optional Roof Pitch: 4/12 - 8/12

Structure: Hexagonal design, pre-fabricated, powder coated steel frame

Frame: Tubular

Gutters: Extruded aluminum gutters sent on standard models & most roof options

Roof: Structural, interlocking panels for superior strength with less supports

Standard Roof Panels: 24" wide "W" design in high strength aluminum or galvalume

Optional Roof Panels: 8" aluminum flat panel, 3" sandwich panel, 18" wide standing seam panel, and tongue & groove wood with shingles

Add-On Accessories: Cupola, double tier roof, aluminum railing, benches



AZTEC SERIES



FEATURED PROJECT

Friendship Gardens Wedding & Party Gazebos



Structures: (2) 18' & (1) 28' Diameter Aztec Shelters



Location: Plainfield, Indiana



Design Notes: Double & Triple Tier Shelters with Cupolas



Frame Color: 550 White

Roof Color: 555 Dark Green

AZTEC PRODUCT FEATURES

Sizes: 16-54' diameter

Roof Pitch: Standard 3/12

Optional Roof Pitch: 4/12 - 8/12

Structure: Octagonal design, pre-fabricated, powder coated steel frame

Frame: Tubular

Gutters: Extruded aluminum gutters sent on standard models & most roof options

Roof: Structural, interlocking panels for superior strength with less supports

Standard Roof Panels: 24" wide "W" design in high strength aluminum or galvalume

Optional Roof Panels: 8" aluminum flat panel, 3" sandwich panel, 18" wide standing seam panel, and tongue & groove wood with shingles

Add-On Accessories: Cupola, double & triple tier roof, aluminum railing, benches



CHEROKEE SERIES

FEATURED PROJECT *Lake Side Rest Area*



Structure: 8x10' Cherokee Shelter



Location: Rend Lake, Illinois



Design Notes: Double Aluminum Benches



Frame Color: 535 Ivory

Roof Color: 555 Dark Green

CHEROKEE PRODUCT FEATURES

Sizes: Ranging from 8-12' wide and 8-12' long

Roof Pitch: Standard 3/12

Structure: Pre-fabricated, powder coated steel frame

Frame: Tubular

Gutters: Extruded aluminum gutters sent on standard models & most roof options

Roof: Structural, interlocking panels for superior strength with less supports

Standard Roof Panels: 24" wide "W" design in high strength aluminum or galvalume

Optional Roof Panels: 8" aluminum flat panel, 18" wide standing seam panel

Add-On Accessories: Bulletin boards, bench, table & bench, double bench



ALGONQUIN SERIES

FEATURED PROJECT *Public Park Picnic Area*



Structure: 10x16' Algonquin Shelter



Location: Bull Shoals, Arkansas



Design Notes: Four post, direct bury



Frame Color: 510 Black

Roof Color: 845 Almond

ALGONQUIN PRODUCT FEATURES

Sizes: Ranging from 10-12' wide and 10-24' long

Structure: Pre-fabricated, powder coated Aluminum components

Frame: Tubular

Gutters: Standard Extruded Aluminum

Roof: Structural, interlocking panels for superior strength with less supports

Standard Roof Panels: 24" wide "W" design in high strength aluminum or galvalume

Optional Roof Panels: 8" aluminum flat panel, 3" sandwich panel

Add-On Accessories: Aluminum railing



PERGOLA SERIES

FEATURED PROJECT *Retirement Facility Garden Area*



Structure: 6x35' Curved Steel Pergola



Location: Parkville, Maryland



Design Notes: Steel Structure, with stamped aluminum panels



Frame Color: 550 White

Roof Color: 250 PW Bronze

PERGOLA PRODUCT FEATURES

Sizes: Custom designed to fit your application

Structure: Pre-fabricated, powder coated aluminum components

Frame: Tubular

Header Options: Curved/straight steel, extruded aluminum, or 3x8" wood grain embossed aluminum

Roof Options: Wood grain embossed aluminum, round extruded aluminum tubes, or stamped aluminum panels (multiple designs available)

Add-On Accessories: Fabric drape, roll up curtains



SHADE SAILS SERIES

FEATURED PROJECT *Poolside Lounge Area*



Structure: 12x12' One-Post Offset Fabric Shade Sail



Location: Evergreen, Colorado



Design Notes: Offset single posts

Frame Color: 520 Bronze



Roof Color: Cream Solamesh Fabric

SHADE SAIL PRODUCT FEATURES

Sizes: Multiple models & sizes

Structure: Pre-fabricated, powder coated steel frame

Frame: Tubular

Fabric: Maintenance free high strength 100% HDPE round yarn

Fabric Top: Designed to withstand high winds with no re-tensioning required

Optional Roof Options: 16 vibrant colors available



WALKWAY SERIES

FEATURED PROJECT *Highschool Entryway Door*



Structure: 12x12' Walkway Cover



Location: Central City, Illinois



Design Notes: Added 8" Decorative Railing



Frame Color: 285 Red

Roof Color: 550 Bone White

WALKWAY PRODUCT FEATURES

Sizes: Ranging from 6-50' wide and 10-80' long

Roof Pitch: Varies depending on structure needs

Structure: Pre-fabricated, powder coated steel frame with surface mount brackets

Frame: Tubular

Gutters: Standard extruded aluminum

Roof: Structural, interlocking panels for superior strength with less supports

Standard Roof Panels: 24" wide "W" design in high strength aluminum or galvalume

Optional Roof Panels: 8" aluminum flat panel

Add-On Accessories: Aluminum railing



ENTRY COVERS SERIES

FEATURED PROJECT Office Building Entry Cover



Structure: 6x24' Imperial Entry Cover



Location: Cincinnati, Ohio



Design Notes: Aftermarket lights added to roof panels



Frame Color: 510 Black

Roof Color: 830 Matte Black

ENTRY COVER PRODUCT FEATURES

Sizes: Ranging from 4-10' projection and 4-25' long

Structure: Pre-fabricated, powder coated aluminum components

Gutters: Standard extruded aluminum, 6" fascia with 4" gutter

Roof: Structural, interlocking panels for superior strength with less supports

Standard Roof Panels: 24" wide "W" design in high strength aluminum or galvalume

Optional Roof Panels: 8" aluminum flat panel

Supports: Overhead braces or post models depending on needs or building structure

Add-On Accessories: Extended gutter, crown molding



SPORTS STRUCTURES SERIES



FEATURED PROJECT *Sports Park Bleacher Seating*



Structure: 8x38' Full Cantilever Bleacher Cover



Location: O'Fallon, Illinois



Design Notes: Surface mount tubular posts



Frame Color: 535 Ivory

Roof Color: 285 Red

SPORTS STRUCTURES PRODUCT FEATURES

Sizes: Varies depending on application and structure needs

Structure: Pre-fabricated, powder coated steel frame

Frame: Tubular

Gutters: Extruded aluminum gutters sent on standard model & most roof options

Roof: Structural, interlocking panels for superior strength with less supports

Standard Roof Panels: 24" wide "W" design in high strength aluminum or galvalume

Optional Roof Panels: 8" aluminum flat panel, 3" sandwich panel, tongue and groove wood with shingles

Add-On Accessories: Extruded aluminum benches/bleachers





Roof Panel Options



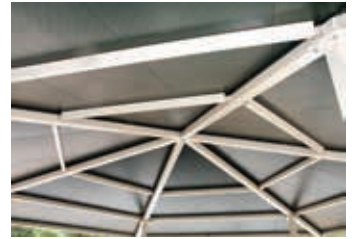
24" Wide "W" Panel, Structural
 • Aluminum, High Strength Alloy
 • Galvalume Steel, ASTM A792 GR50



18" wide standing seam panel
 • Galvalume steel, ASTM A792 Gr 50



Tongue and Groove Wood
 1) Southern Yellow Pine
 2) Western Cedar



Insulated Sandwich Panel
 3" Thick X 48" Wide, High Density
 Polystyrene Between Two Layers of Stucco
 Embossed .032 Aluminum

SIMPLE INSTALLATION

- Pre-drilled structure for bolt together assembly, snap together roof panels and detailed assembly instructions help minimize installation costs.
- Zinc plated, galvanized or stainless steel fasteners eliminated rust and stains.

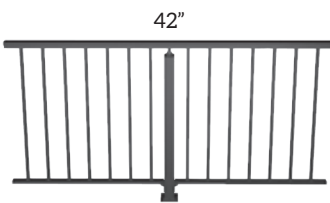
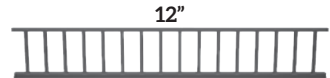
EXTRUDED TRIM COMPONENTS

- Extruded aluminum fascia, gutter and ridge caps ensure straight flush edges enhancing a "cleaner", high quality look.
- Extruded gutters, stronger than roll formed trim, help control water run off and soil erosion.

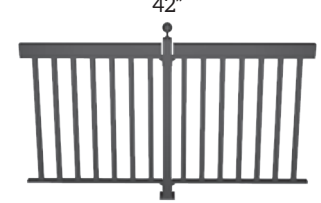
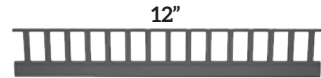
HEAVY DUTY ALUMINUM RAILING

- Four styles: standard, classic, circle, & diamond
- Pre-assembled aluminum sections are faster to install and never rust, eliminating multiple scraping & repainting
- All railings meet OSHA, ADA, BOCA safety criteria

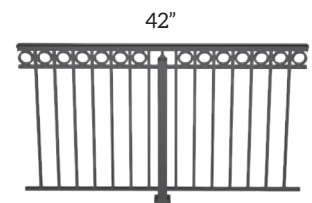
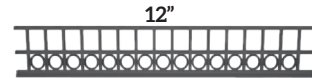
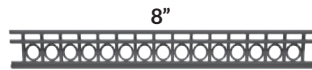
Aluminum Railing Options



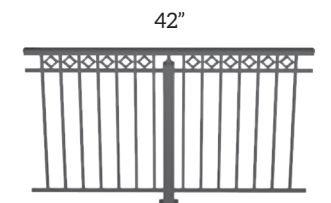
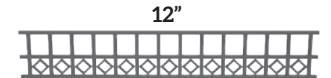
Standard Rail



Classic Rail



Circle Rail



Diamond Rail

Cupola Options



Louvered or Railed Cupola
 4' x 4' or 2' x 2' Available



Open Cupola
 4' x 4' or 2' x 2' Available



6' x 12' Cupola
 Louvered or Railed

Frame & Post Styles



C Channel

C Channel shelters are the most economical shelters on the market and are formed into a tapered "C" with 4 exposed anchor bolts.



Tubular Square

Tubular Shelters use a straight post and have a single concealed anchor bolt.

PW sport/site



Looking for Premium Quality Site Furnishings to complement your new shelter?
PW Sport & Site, a subsidiary of Americana Outdoors has you covered!

Our selection of various site furnishings are a perfect match to the craftsmanship and quality of the Americana shelters. Like our shelter products, all of the site furnishings are 100% made in the U.S.A. and have one of the best warranties in the industry.

For more information give us a call at 1-888-442-2925
or visit our website at www.Patterson-Williams.com

Standard: Super durable frame finishes:

The anti-graffiti, super durable polyester TGIC finish, is a powder that is applied 6-9 mils thick then cured at 400 degrees until fused into a smooth glossy permeate coating. This coating meets AAMA 2604-2 specifications and has a much longer life expectancy than the industries standard TGIC. This anti-graffiti coating provides an outstanding finish.

The smooth glossy surface can withstand numerous cleanups with the use of our proprietary chemical cleaner without altering the finish. Paint and marker can be removed completely with only a slight reduction in gloss.

The architectural matte, super durable polyester TGIC finish, is a powder that is applied 6-9 mils thick then cured at 400 degrees into a smooth matte permeate coating. This coating meets AAMA 2604-2 specifications and has a much longer life expectancy than the industries standard TGIC.

Premium Frame Finish (up charge)

A 2-3 mil thick zinc rich primer is applied prior to a final standard color coat. This premium finish enhances the ability of your structure to combat even the harshest environments and has withstood over 1000 hours in our salt/fog test chamber. This primer prevents rust from forming and spreading in the event of nicks and scratches in the color coat, providing the ultimate in pre-finished steel structure coatings.



Warranty Terms

Lifetime Limited Warranty

Lifetime Limited Warranty on aluminum against material failure and corrosion.

25 Year Limited Warranty

25 Year Limited Warranty on steel against material failure and defects.

10 Year Limited Warranty

10 Year Limited Warranty on Solamesh Fabrics

10 Year Limited Warranty on all powder coat finishes (200 and 500 series).

With the use of Americana's 500 Series Anti-graffiti powder coat finish is guaranteed to allow removal of graffiti with virtually no change to the finish.

Americana will not be responsible for damages caused by others, building settlement, corrosion by moisture, chemical and pollution, or acts of God. Damage caused by vandalism, abnormal use, lack of maintenance, or incorrect installation will not be covered.

200/800 SERIES SUPER DURABLE FRAME COLOR OPTIONS



500 SERIES SUPER DURABLE & ANTI-GRAFFITI FRAME COLOR OPTIONS

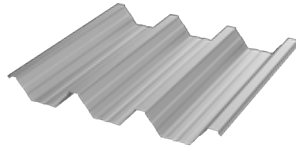


SOLAMESH™ FABRIC COLOR CHOICES

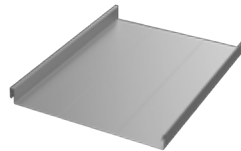


SolaMesh is an innovative new fabric using polymer technology, perfect for shade sails and other shade structures. Tested in the world's harshest environments, this shade sail fabric is made from highly stable HPDE monofilament and tape. It provides best-in-class strength, value, and longevity.

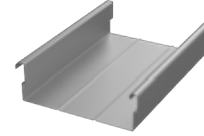
AMERICANA ROOF PANEL CHOICES & COLORS



24" wide structural "W" panel
1) Aluminum, stucco embossed
2) Galvalume® 24 gauge



18" wide standing seam panel
Galvalume® 24 gauge



8" wide structural flat panel
Aluminum, matte finish



3" thick sandwich panel
White stucco finish with foam core



Tongue and Groove Wood
1) Southern Yellow Pine
2) Western Cedar

Color Name	Ultra-Cool Ratings			24" Aluminum Panel	24" Galvalume Panel 24 Ga.	18" Galvalume Panel 24 Ga.	8" Aluminum Panel
	Reflect	Emiss	SRI				
225 WICKER	N/A	N/A	N/A				X
275 SLATE GRAY*	38	0.85	41	X	X	X	
285 RED	N/A	N/A	N/A	X		X	
510 BLACK	N/A	N/A	N/A				X
515 REGAL BLUE	N/A	N/A	N/A	X		X	
520 BRONZE	N/A	N/A	N/A	X		X	X
540 TAN	N/A	N/A	N/A	X	X	X	X
545 TERRA COTTA	N/A	N/A	N/A	X		X	
550 BONE WHITE	71	0.87	86	X	X	X	X
555 DARK GREEN	N/A	N/A	N/A	X	X	X	
560 ANODIZED	N/A	N/A	N/A				X
810 SLATE BLUE*	31	0.85	31		X		
815 ASH GRAY*	52	0.86	60		X		
820 CHARCOAL GRAY*	25	0.87	24	X	X		
825 HEMLOCK GREEN*	36	0.86	38		X		
830 MATTE BLACK*	25	0.85	23	X	X	X	X
835 BURGUNDY*	30	0.85	30		X		
840 COLONIAL RED*	28	0.86	28		X		
845 ALMOND*	65	0.85	77	X	X		
850 MANSARD BROWN*	26	0.87	26	X	X		
855 MEDIUM BROWN*	33	0.86	34	X	X		
860 COPPER PENNY*	41	0.86	45			X	
865 LIGHT GREEN*	N/A	N/A	N/A	X	X		

****COLORS CONTAINING ASTERISK HAVE A WASH COAT PRIMER ON ONE SIDE****



PO Box 1290, Salem IL 62881
1-800-851-0865, Fax: 1-618-548-2890
Sales@Americana.com
www.Americana.com

